

NOLITA

# 264 BOWERY

BTW E HOUSTON & PRINCE STREETS  
NEW YORK, NY 10012

WESTWOODGALLERY  
NEW YORK CITY

262 BOWERY

# SIGNAGE

264

264



# 264 BOWERY

## NOLITA - NEW YORK

BTW E HOUSTON & PRINCE STREETS | NEW YORK, NY 10012

### Size

Ground Floor: 1,500 SF

Basement: 1,000 SF

Frontage 15 FT

Possession Immediate

### Highlights

- Previously vented, all uses considered
- Move-in condition
- Located in the convergence of Soho, Nolita and Lower East Side in Downtown Manhattan

### Neighbors

Whole Foods, Bar Veloce, Spicy Moon, Bowery & Vine, Plantshed, The New Museum, Supreme, Camper, IXTA, Tacombi, Bar Primi, The Musket Room, Sweet & Vicious, 310 Bowery Bar, The Bowery Electric, John Varvatos, Trek

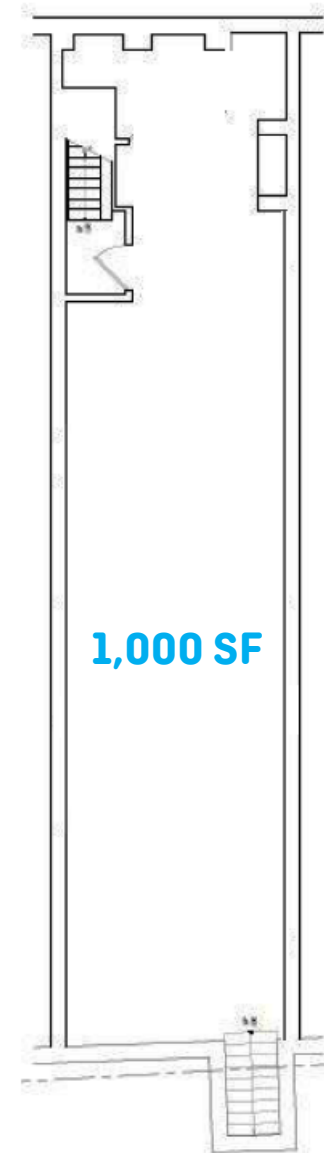
GROUND FLOOR



← 15 FT →

BOWERY

BASEMENT





WINICK  
REALTY  
GROUP

WINICK REALTY GROUP LLC  
LICENSED REAL ESTATE BROKERS

655 THIRD AVENUE, 24TH FL NEW YORK, NY 10017 T: 212 792 2600 | W: WWW.WINICK.COM

ALTHOUGH ALL INFORMATION REGARDING PROPERTY FOR SALE, RENTAL OR FINANCING IS FROM SOURCES DEEMED RELIABLE SUCH INFORMATION HAS NOT BEEN VERIFIED, AND NO EXPRESS REPRESENTATION IS MADE NOR IS ANY TO BE IMPLIED AS TO THE ACCURACY THEREOF, AND IT IS SUBMITTED SUBJECT TO ERRORS, OMISSIONS, CHANGE OF PRICE, RENTAL OR OTHER CONDITIONS, PRIOR SALE, LEASE OR FINANCING, OR WITHDRAWAL WITHOUT NOTICE.

FOR MORE INFORMATION, PLEASE CONTACT EXCLUSIVE AGENTS

LEE BLOCK  
212 792 2649  
LEE@WINICK.COM

ALEXANDER KARAS  
212 792 2656  
AKARAS@WINICK.COM