

159 WEST 23RD STREET

BETWEEN SIXTH AND SEVENTH AVENUES | NEW YORK, NY 10011 | CHELSEA



159 WEST 23RD STREET

BETWEEN SIXTH AND SEVENTH AVENUES
NEW YORK, NY 10011 | CHELSEA

PREMISES (approx.)

Ground Floor2,400 SF
Basement2,200 SF

POSSESSION

Immediate

ASKING PRICE

Upon Request

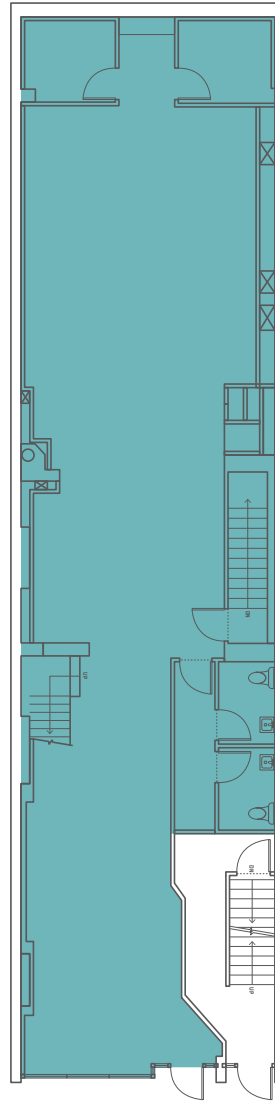
COMMENTS

- Column-free, newly built space, located on heavily trafficked West 23rd Street
- Ground floor and second floor can be combined or leased separately
- All uses considered

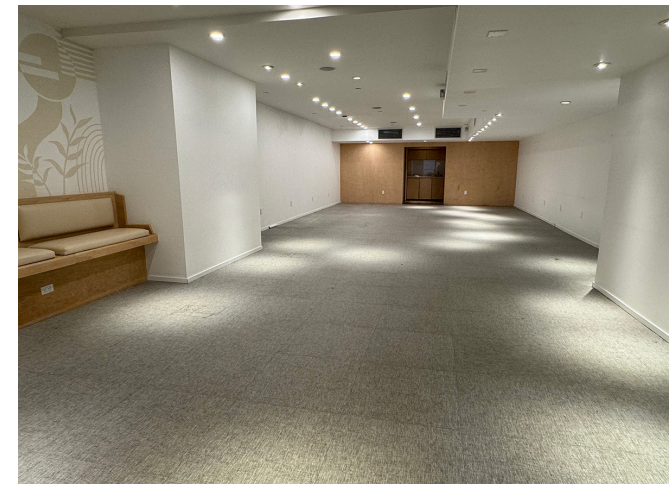
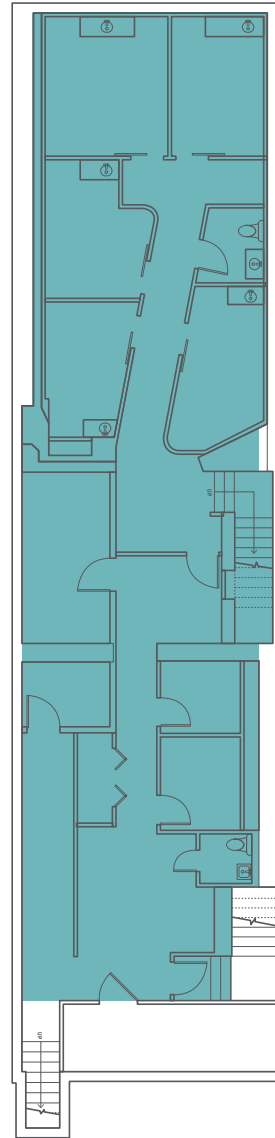
NEIGHBORING TENANTS

Solidcore, Orangetheory Fitness, Rumble Boxing, Westside Market, 7th Street Burger, Capital One, Wonder, East One Coffee, Satori Laser

Ground Floor
2,400 SF



Basement
2,200 SF



WEST 23RD STREET

159 WEST 23RD STREET

BETWEEN SIXTH AND SEVENTH AVENUES
NEW YORK, NY 10011 | CHELSEA

PREMISES (approx.)

Second Floor 2,400 SF*

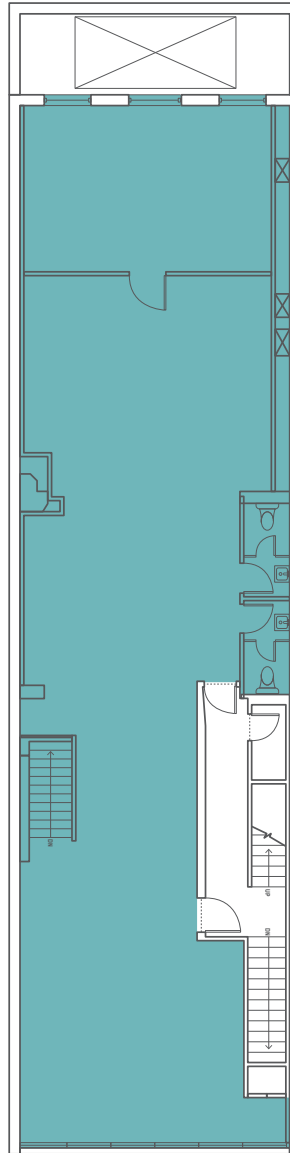
POSSESSION

Immediate

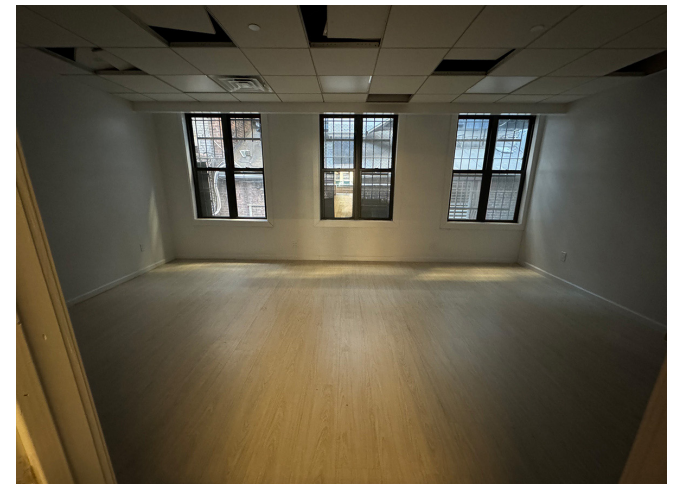
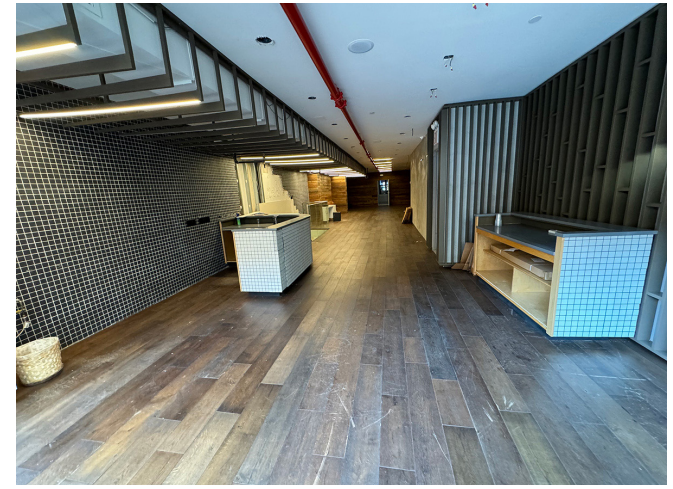


*Second floor can be combined with the ground floor and basement

Second Floor 2,400 SF



WEST 23RD STREET



159 WEST 23RD STREET

BETWEEN SIXTH AND SEVENTH AVENUES
NEW YORK, NY 10011 | CHELSEA



Winick Realty Group LLC, Licensed Real Estate Brokers
655 Third Avenue, 24th Floor | New York, NY 10017
T 212.792.2600 | F 212.792.2660 | winick.com

ALTHOUGH ALL INFORMATION REGARDING PROPERTY FOR SALE, RENTAL OR FINANCING IS FROM SOURCES DEEMED RELIABLE SUCH INFORMATION HAS NOT BEEN VERIFIED, AND NO EXPRESS REPRESENTATION IS MADE NOR IS ANY TO BE IMPLIED AS TO THE ACCURACY THEREOF, AND IT IS SUBMITTED SUBJECT TO ERRORS, OMISSIONS, CHANGE OF PRICE, RENTAL OR OTHER CONDITIONS, PRIOR SALE, LEASE OR FINANCING, OR WITHDRAWAL WITHOUT NOTICE.

For more information, please contact our exclusive brokers:

Lee Block
212.792.2649
lee@winick.com

Amanda Lagowitz
212.792.2619
alagowitz@winick.com

Oliver Stern
212.792.2609
ostern@winick.com