

Between Lexington and Park Avenues

108

East 96th Street
New York, NY 10128



108 East 96th Street

New York, NY 10128

Between Lexington and Park Avenues

SIZE

Ground Floor 1,400 SF

Lower Level 680 SF

CEILING HEIGHT

Ground Floor 10 FT

Lower Level 9 FT

POSSESSION

Immediate

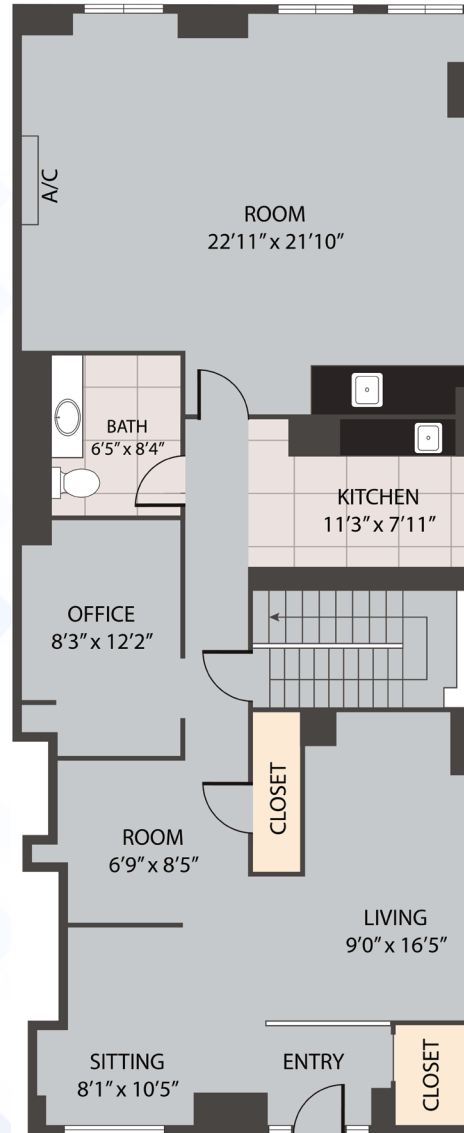
COMMENTS

- Located just steps away from all major transportation
- First time available in 15 years
- Medical, school and non-profit use only

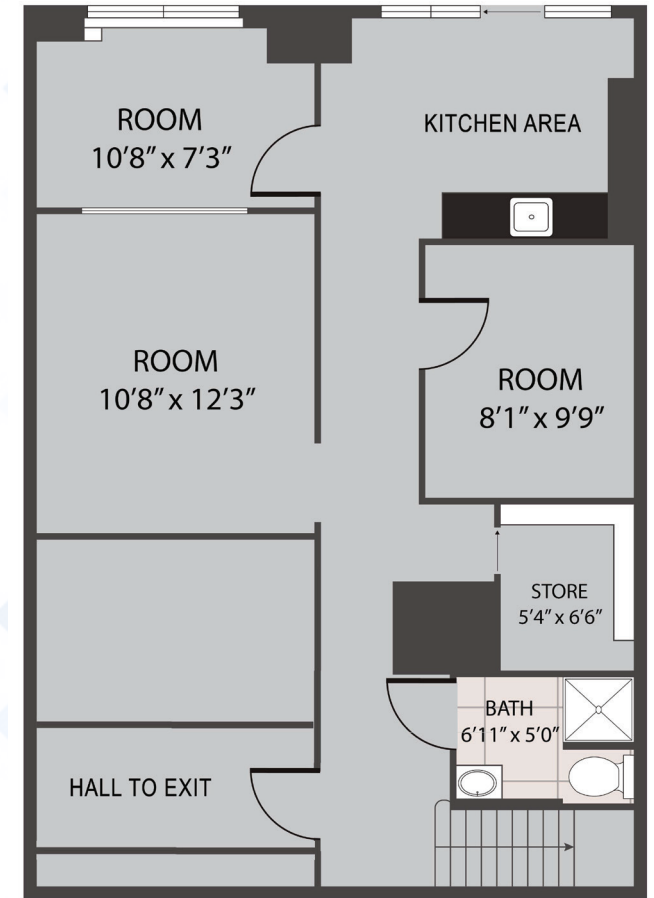
NEIGHBORS

Mount Sinai Medical Center, City MD, CVS, Starbucks, Taco Bell, Duane Reade, Hunter College, Five Iron Golf, Joe and the Juice, Hess Radiology

Ground Floor
1,400 SF



Lower Level
680 SF



Winick Realty Group LLC, Licensed Real Estate Brokers
655 Third Avenue, 24th Floor | New York, NY 10017
T 212.792.2600 | F 212.792.2660 | winick.com

ALTHOUGH ALL INFORMATION REGARDING PROPERTY FOR SALE, RENTAL OR FINANCING IS FROM SOURCES DEEMED RELIABLE SUCH INFORMATION HAS NOT BEEN VERIFIED, AND NO EXPRESS REPRESENTATION IS MADE NOR IS ANY TO BE IMPLIED AS TO THE ACCURACY THEREOF, AND IT IS SUBMITTED SUBJECT TO ERRORS, OMISSIONS, CHANGE OF PRICE, RENTAL OR OTHER CONDITIONS, PRIOR SALE, LEASE OR FINANCING, OR WITHDRAWAL WITHOUT NOTICE

For more information, please contact our exclusive agents:

Steven E. Baker
212.792.2636
stevenb@winick.com

Hal Shapiro
212.792.2623
hal@winick.com