

NEW YORK, NY 10012 | NOHO

# 316

BOWERY

## RETAIL CONDO FOR SALE



# 316

## BOWERY

Corner of Bowery and Bleecker Street

### SIZE

Ground Floor	1,651 SF
Lower Level	1,780 SF

### FRONTAGE

40' on Bowery  
44' on Bleecker Street

### BLOCK & LOT

Block	521
Lot	1401

### ASKING PRICE

Upon Request

### ESTIMATED ANNUAL EXPENSES

Taxes	\$67,388
CAM & Insurance	\$20,369

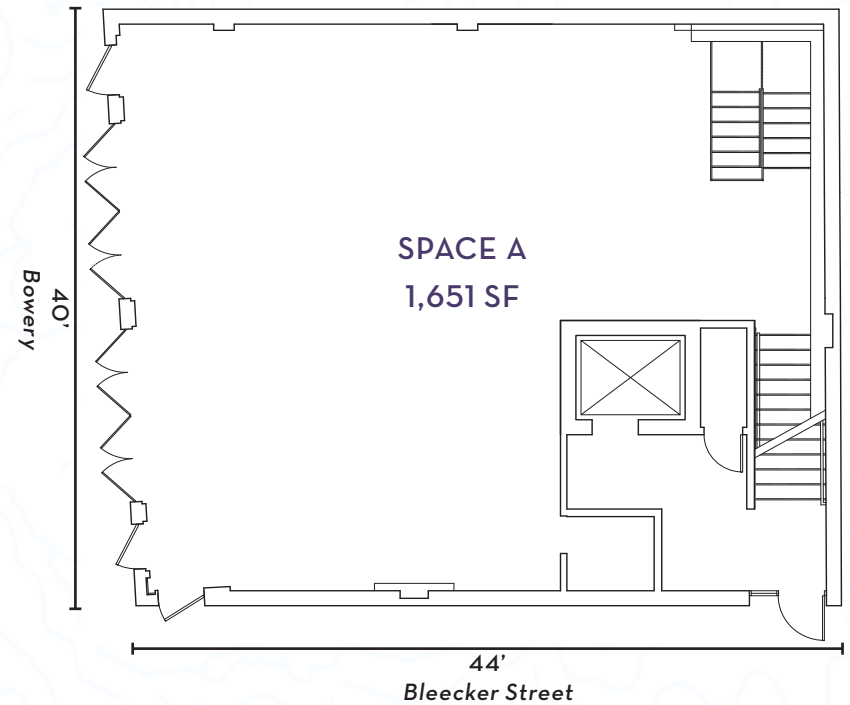
### COMMENTS

- Iconic NOHO corner location
- Fully built space on ground floor and lower level
- Currently J.Crew

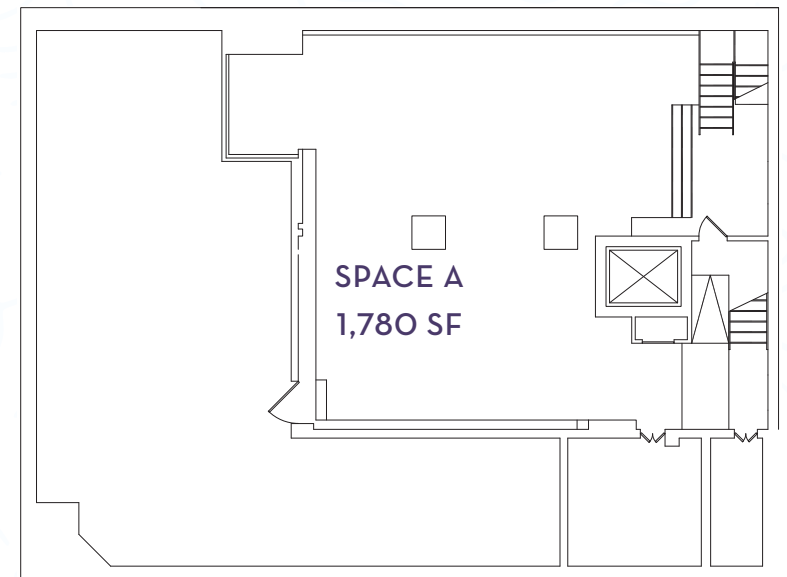
### NEIGHBORS

KITH, Gemma, Rag & Bone, Billy Reid, Bowery Meat Company, Bar Primi, Il Buco, Whole Foods

### GROUND FLOOR



### LOWER LEVEL





For more information  
please contact our exclusive agents:

Lee Block  
212.792.2649  
lee@winick.com

Jeff Winick  
212.792.2601  
jeff@winick.com

**WRG** | WINICK  
REALTY  
GROUP

Winick Realty Group LLC, Licensed Real Estate Brokers  
655 Third Avenue, 24th Floor | New York, NY 10017  
T 212.792.2600 | F 212.792.2660 | winick.com

ALTHOUGH ALL INFORMATION REGARDING PROPERTY FOR SALE, RENTAL OR FINANCING IS FROM SOURCES DEEMED RELIABLE SUCH INFORMATION HAS NOT BEEN VERIFIED, AND NO EXPRESS REPRESENTATION IS MADE NOR IS ANY TO BE IMPLIED AS TO THE ACCURACY THEREOF, AND IT IS SUBMITTED SUBJECT TO ERRORS, OMISSIONS, CHANGE OF PRICE, RENTAL OR OTHER CONDITIONS, PRIOR SALE, LEASE OR FINANCING, OR WITHDRAWAL WITHOUT NOTICE