

2128 Second Avenue

New York NY, 10029 | East Harlem



2128 Second Avenue

New York, NY 10029 | East Harlem

Between East 109th and 110th Streets

Size

Ground Floor	Lower Level	Frontage
650 SF	500 SF	9 FT

Possession Asking Rent

Immediate Upon Request

Comments

- Fully built out space
- New HVAC unit
- Venting is in place
- Outdoor Patio
- New built out bathroom

Neighbors

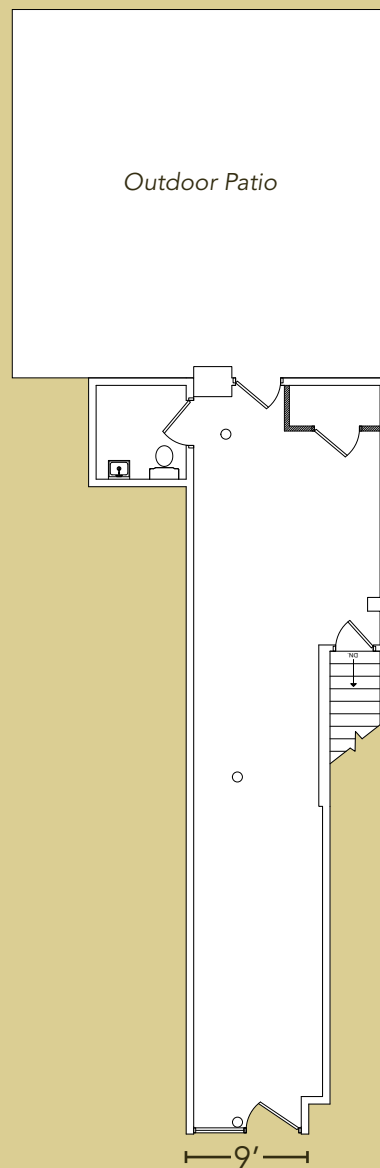
Richardo's Steakhouse, Montecarlo Diner, NYC Housing Authority, P. S. 083, P.S. 182, East Harlem Elementary Academy, Animal Care Centers of NYC, Brother's Bakery Cafe, Xclusive Arrivals Sneaker Boutique



Winick Realty Group LLC, Licensed Real Estate Brokers
655 Third Avenue, 24th Floor | New York, NY 10017
T 212.792.2600 | F 212.792.2660 | winick.com

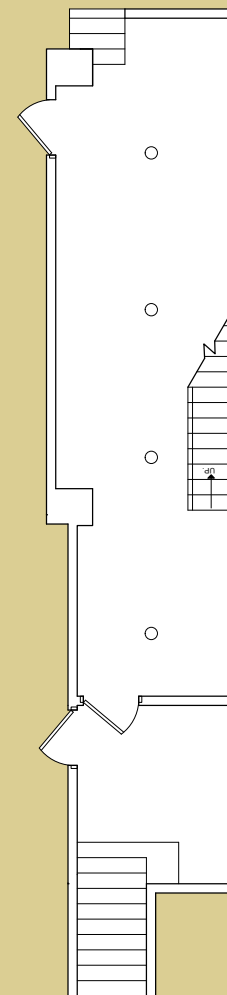
ALTHOUGH ALL INFORMATION REGARDING PROPERTY FOR SALE, RENTAL OR FINANCING IS FROM SOURCES DEEMED RELIABLE SUCH INFORMATION HAS NOT BEEN VERIFIED, AND NO EXPRESS REPRESENTATION IS MADE NOR IS ANY TO BE IMPLIED AS TO THE ACCURACY THEREOF, AND IT IS SUBMITTED SUBJECT TO ERRORS, OMISSIONS, CHANGE OF PRICE, RENTAL OR OTHER CONDITIONS, PRIOR SALE, LEASE OR FINANCING, OR WITHDRAWAL WITHOUT NOTICE.

Ground Floor - 650 SF



Second Avenue

Lower Level - 500 SF



For more information, please contact exclusive agent:

Hal Shapiro

212.792.2623

hal@winick.com