

# 210

SPRING STREET

SOHO  
NEW YORK, NY 10012





# 210 SPRING STREET

New York, NY 10012

**Ground Floor** 2,000 SF

**Basement (contiguous)** 1,700 SF

**Ceiling Height** 11 FT

**Frontage** 27 FT

**Possession** Immediate

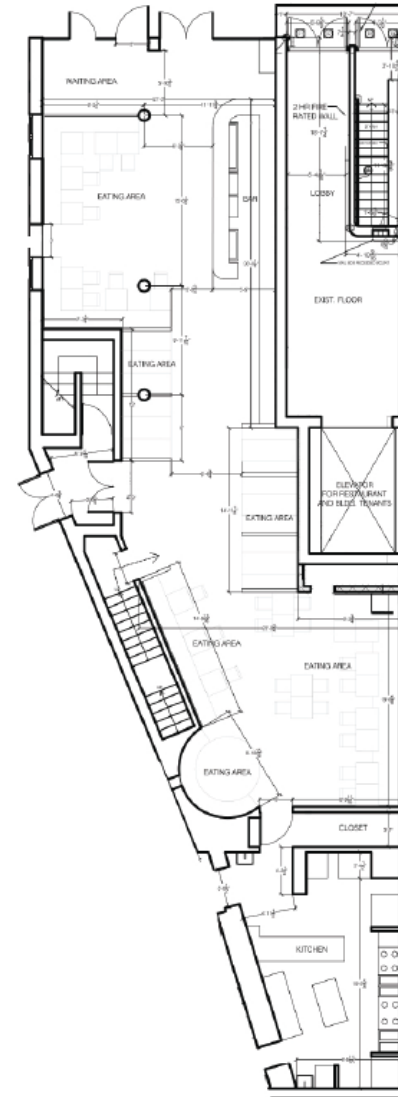
## Comments

- Prime Soho with outstanding visibility/frontage across from the Spring Street C/E subway entrance.
- Very close proximity to Disney/ABC HQ (coming soon) and Google's 1.7M SF Hudson Square Campus.
- Fully built restaurant/bar in prime SoHo
- Public assembly for 120 people
- Full liquor license
- Elevator
- Previously Aquagrill

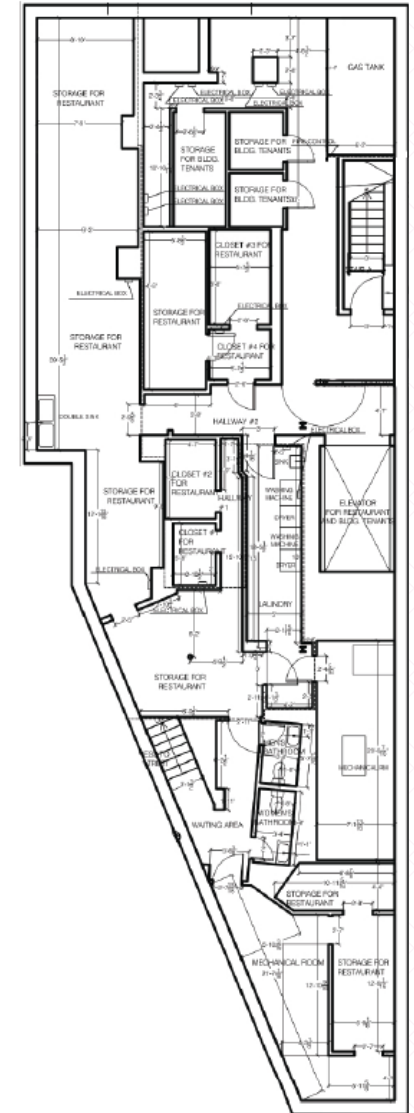
## Neighbors

Nello (coming soon), Trader Joe's, Sugarfish, Piccola Cucina, CVS, Blue Ribbon Brasserie, Blue Ribbon Sushi, Alidoro, Dominique Ansel Bakery, Soho Room, The Woo, Altesi, St. Tropez, The Dutch, Lola Taverna, Boqueria

GROUND  
2,000 SF



BASEMENT  
1,700 SF



**WRG** | WINICK REALTY GROUP | Winick Realty Group LLC, Licensed Real Estate Brokers  
655 Third Avenue, 24th Floor | New York, NY 10017  
T 212.792.2600 | F 212.792.2660 | winick.com

ALTHOUGH ALL INFORMATION REGARDING PROPERTY FOR SALE, RENTAL OR FINANCING IS FROM SOURCES DEEMED RELIABLE SUCH INFORMATION HAS NOT BEEN VERIFIED, AND NO EXPRESS REPRESENTATION IS MADE NOR IS ANY TO BE IMPLIED AS TO THE ACCURACY THEREOF, AND IT IS SUBMITTED SUBJECT TO ERRORS, OMISSIONS, CHANGE OF PRICE, RENTAL OR OTHER CONDITIONS, PRIOR SALE, LEASE OR FINANCING, OR WITHDRAWAL WITHOUT NOTICE

For more information, please contact our exclusive agent:

**Alex Karas**  
212.792.2656  
akaras@winick.com