

CHELSEA

162 EIGHTH AVENUE

NE CORNER OF WEST 18TH STREET
NEW YORK, NY 10011



WRG | WINICK
REALTY
GROUP

162 EIGHTH AVENUE

CHELSEA - NEW YORK

NE CORNER OF WEST 18TH STREET
NEW YORK, NY 10011

Size

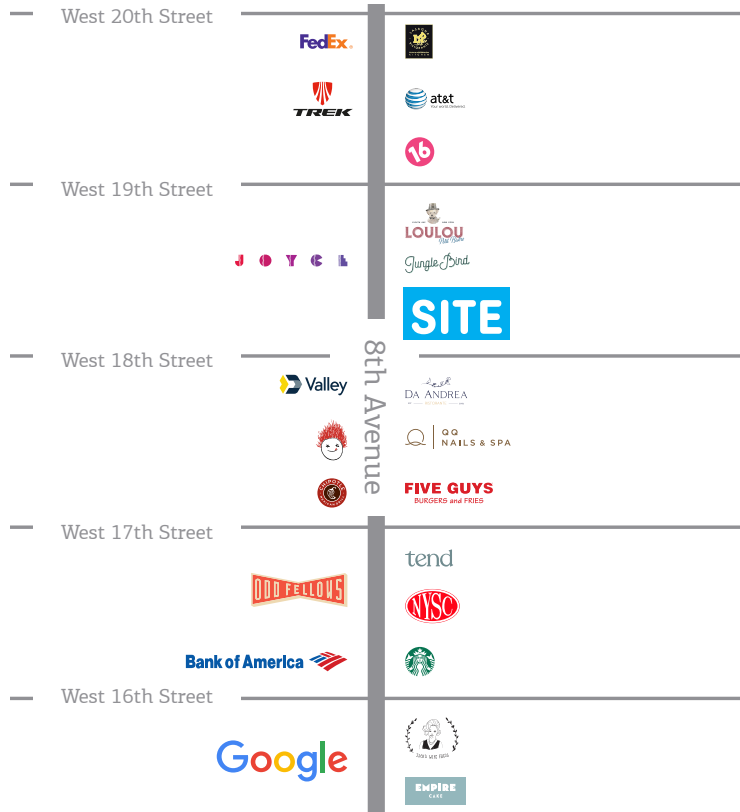
Ground Floor: Approx. 1,100 SF
Contiguous basement with large walk-in box

Corner Frontage 80 FT

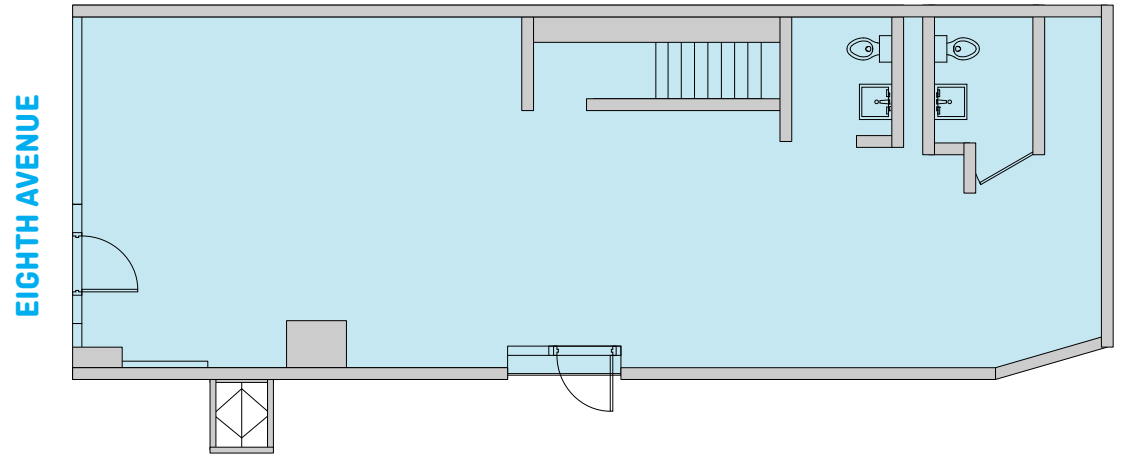
Possession May 2025

Highlights

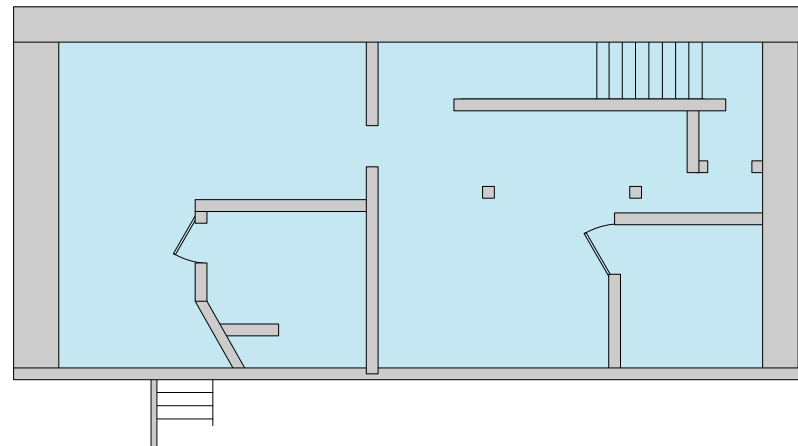
- Column free interior with 10+ feet ceilings
- Bathrooms and HVAC in place
- Currently Bourke Street Bakery



GROUND FLOOR



BASEMENT



FOR MORE INFORMATION, PLEASE CONTACT EXCLUSIVE AGENTS

LEE BLOCK
212 792 2649
LEE@WINICK.COM

ALEXANDER KARAS
212 792 2656
AKARAS@WINICK.COM



WINICK REALTY GROUP LLC
LICENSED REAL ESTATE BROKERS

655 THIRD AVENUE, 24TH FL NEW YORK, NY 10017 T: 212 792 2600 | W: WWW.WINICK.COM

ALTHOUGH ALL INFORMATION REGARDING PROPERTY FOR SALE, RENTAL OR FINANCING IS FROM SOURCES DEEMED RELIABLE SUCH INFORMATION HAS NOT BEEN VERIFIED, AND NO EXPRESS REPRESENTATION IS MADE NOR IS ANY TO BE IMPLIED AS TO THE ACCURACY THEREOF, AND IT IS SUBMITTED SUBJECT TO ERRORS, OMISSIONS, CHANGE OF PRICE, RENTAL OR OTHER CONDITIONS, PRIOR SALE, LEASE OR FINANCING, OR WITHDRAWAL WITHOUT NOTICE.