

UPPER EAST SIDE

1188

FIRST AVENUE

BETWEEN 64TH & 65TH STREETS  
NEW YORK, NY 10065





# 1188 FIRST AVENUE

BETWEEN 64TH & 65TH STREETS  
NEW YORK, NY 10065

GROUND FLOOR

730 SF

BASEMENT

290 SF

FRONTAGE

25 FT

**Possession**

Immediate

**Asking Price**

Upon Request

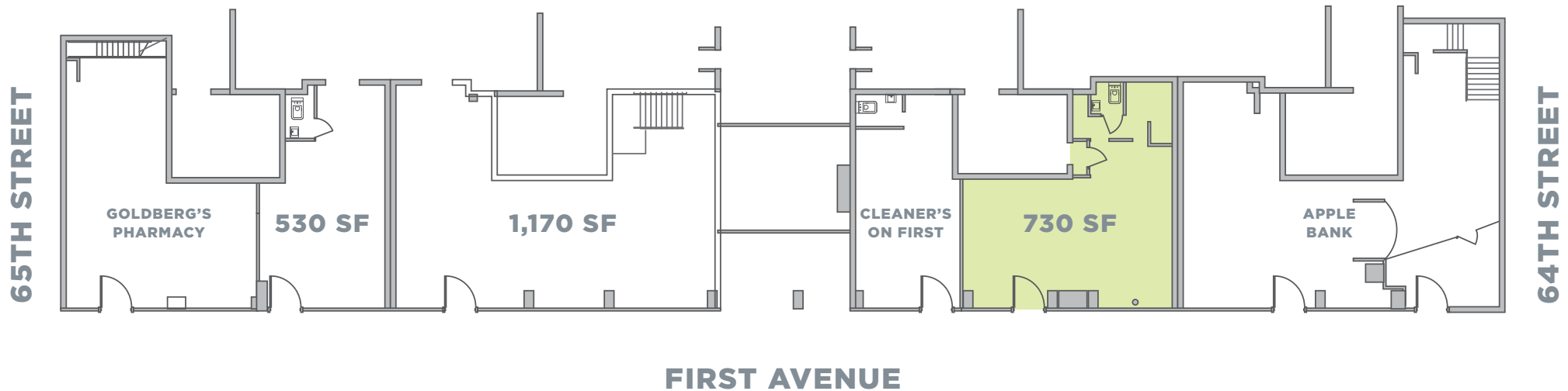
**Highlights**

First time available

Steps from Memorial Sloan Kettering Hospital  
and The Rockefeller University

**Neighbors**

Apple Bank, Felice 64, Gristedes, Goldberg's  
Pharmacy, Barry's Boot Camp, Dunkin'  
Donuts, TD Bank, 7-Eleven



For more information, please contact our exclusive agents:

**Steven E. Baker**  
212-792-2636  
stevenb@winick.com

**Charles Rapuano**  
212-792-2658  
charles@winick.com



Winick Realty Group LLC, Licensed Real Estate Brokers  
655 Third Avenue, 24th Floor | New York, NY 10017  
T 212.792.2600 | F 212.792.2660 | winick.com

ALTHOUGH ALL INFORMATION REGARDING PROPERTY FOR SALE, RENTAL OR FINANCING IS FROM SOURCES DEEMED RELIABLE SUCH INFORMATION HAS NOT BEEN VERIFIED, AND NO EXPRESS REPRESENTATION IS MADE NOR IS ANY TO BE IMPLIED AS TO THE ACCURACY THEREOF, AND IT IS SUBMITTED SUBJECT TO ERRORS, OMISSIONS, CHANGE OF PRICE, RENTAL OR OTHER CONDITIONS, PRIOR SALE, LEASE OR FINANCING, OR WITHDRAWAL WITHOUT NOTICE