

THE RETAIL AT

---

23-10

QUEENS PLAZA SOUTH

OPUS POINT

---

LONG ISLAND CITY, QUEENS

DYNAMIC 

WRG | WINICK  
REALTY  
GROUP



# 23-10

## QUEENS PLAZA SOUTH

### SIZES (approx.)

Ground Floor	8,565 SF
2nd, 3rd & 4th Floors	25,000 SF
5th Floor Terrace	4,168 SF
<b>Total</b>	<b>87,733 SF</b>


### FRONTAGE

208 FT Wraparound

### POSSESSION

2025

### COMMENTS

- Flagship retail opportunity at the base of a new 26-story office tower
- Major branding opportunity in the heart of Long Island City
- Close proximity to multiple subway and bus stations 
- Vast floor plates with great ceiling heights throughout
- Logical divisions considered.



# GROUND FLOOR

23-10 QP5

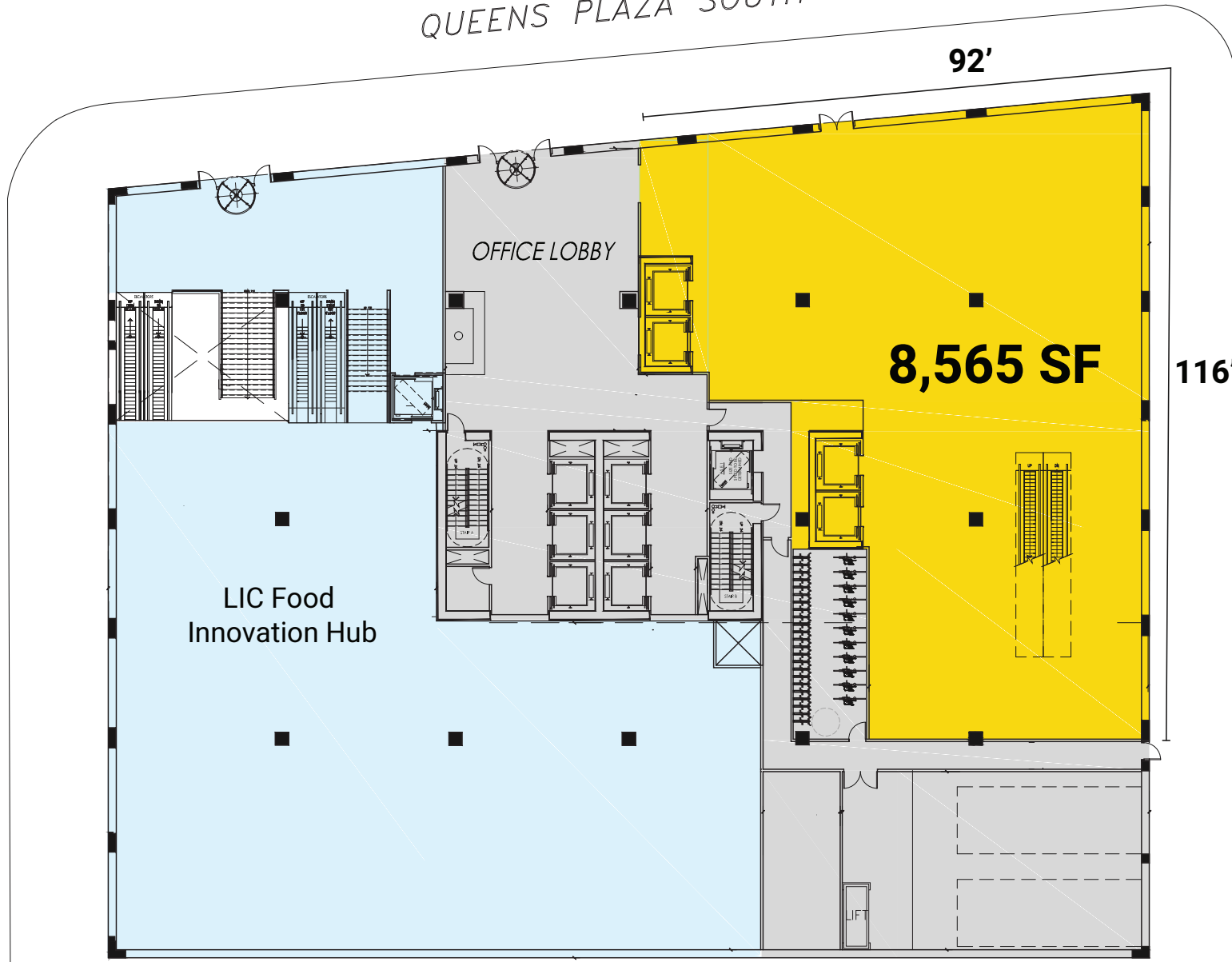
QUEENS PLAZA SOUTH

92'

116'

24TH STREET

23RD STREET



LIC Food  
Innovation Hub

OFFICE LOBBY

8,565 SF

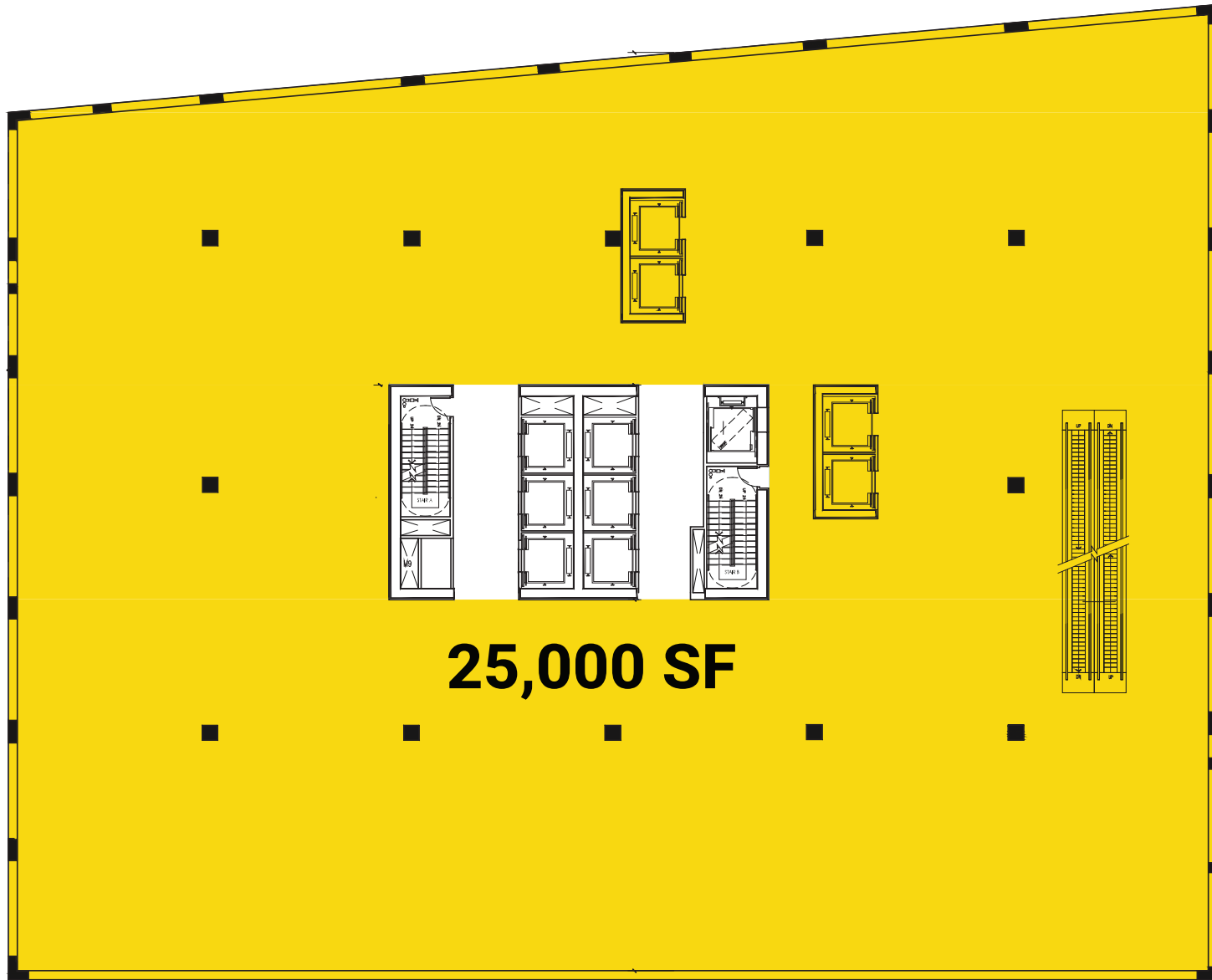
LIFT

# SECOND, THIRD & FOURTH FLOORS

QUEENS PLAZA SOUTH

23RD STREET

24TH STREET



**25,000 SF**

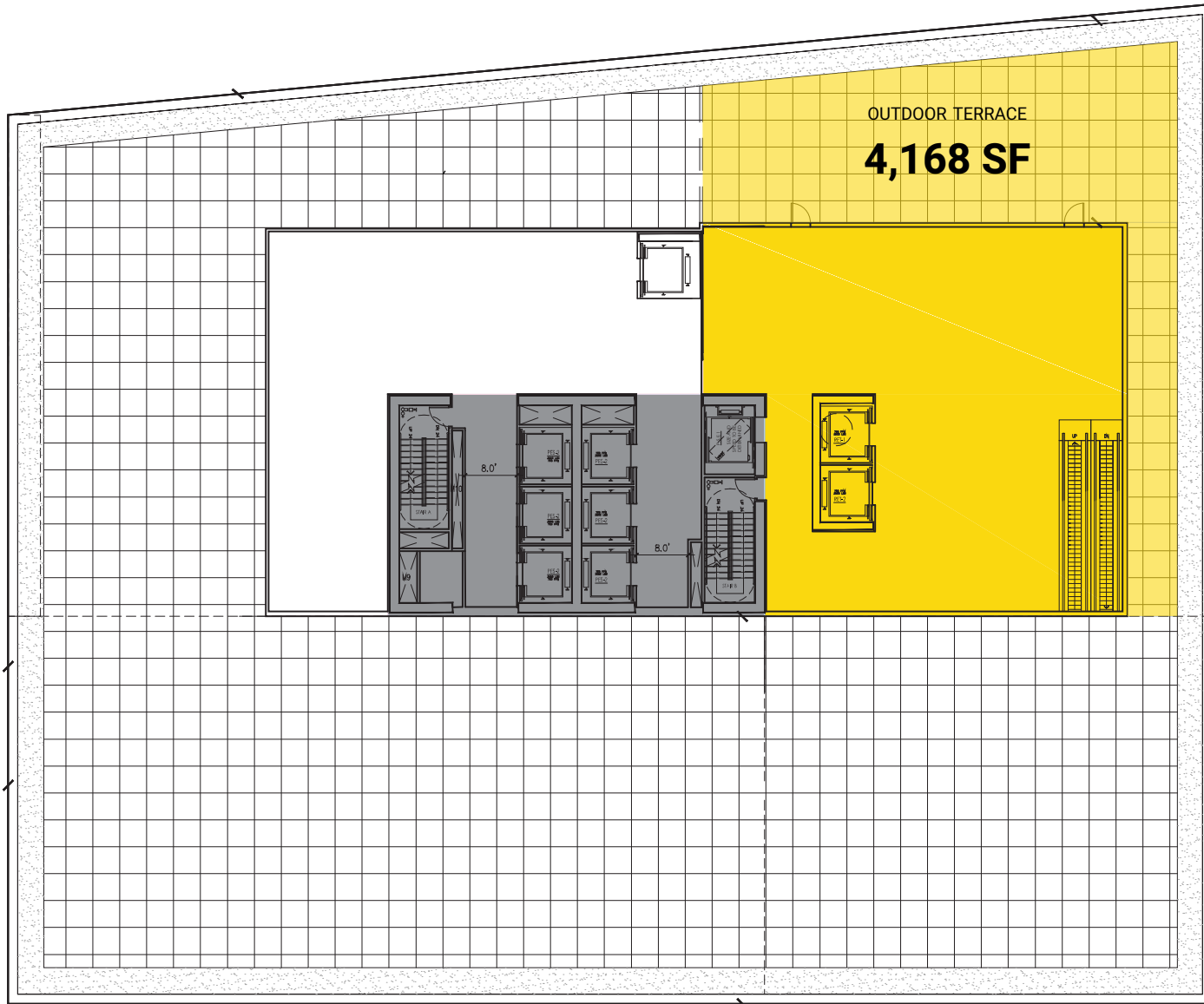


# FIFTH FLOOR TERRACE

23-10 QP5

QUEENS PLAZA SOUTH

23RD STREET



24TH STREET



# AERIAL VIEW

23-10 Q15

Coffee

REEM

OPUS POINT







**23-10** QUEENS PLAZA SOUTH

21st Street - Queensbridge  
3 Minute Walk  
**F**

Queensboro Plaza  
3 Minute Walk  
**7 N W**

Queens Plaza  
5 Minute Walk  
**E M R**

23rd Street - Court Square  
10 Minute Walk  
**E G M 7**



THE RETAIL AT  
**23-10**

**QUEENS PLAZA SOUTH**

LONG ISLAND CITY, QUEENS

For more information, please contact exclusive agents:

**Jeff Winick**

917.414.7776 | 212.792.2601

jeff@winick.com

**Michael Shkreli**

212.792.2638

michael@winick.com

**WRG** | WINICK  
REALTY  
GROUP

Winick Realty Group LLC  
Licensed Real Estate Brokers

655 Third Avenue, 24th Floor | New York, NY 10017  
T 212.792.2600 | F 212.792.2660 | winick.com

**DYNAMIC** ★

**OPUS POINT**

ALTHOUGH ALL INFORMATION REGARDING PROPERTY FOR SALE, RENTAL OR FINANCING IS FROM SOURCES DEEMED RELIABLE SUCH INFORMATION HAS NOT BEEN VERIFIED, AND NO EXPRESS REPRESENTATION IS MADE NOR IS ANY TO BE IMPLIED AS TO THE ACCURACY THEREOF, AND IT IS SUBMITTED SUBJECT TO ERRORS, OMISSIONS, CHANGE OF PRICE, RENTAL OR OTHER CONDITIONS, PRIOR SALE, LEASE OR FINANCING, OR WITHDRAWAL WITHOUT NOTICE