

Turn-Key Medical Space For Lease

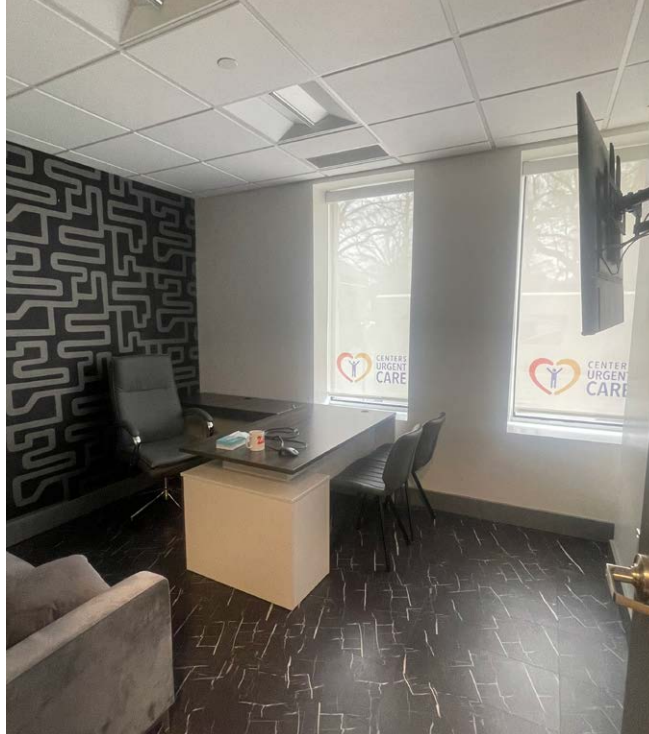
2

West 86th Street
New York, NY 10024





Space A



Space A



Space A



Space B



Space B



Space B

2 West 86th Street

New York, NY 10028
SWC of West 86th & Central Park West

SIZE (Approx.)

Space A 5,000 SF
Space B 3,000 SF

CEILING HEIGHT

10 FT

POSSESSION

Immediate

COMMENTS

- Prime Upper West Side medical/office spaces for lease
- Two separately built-out, turn-key medical facilities
- Spaces can be leased separately or combined for a total of 8,000 SF
- Located steps away from 86th Street Subway Station **B C**
- New direct long term lease from ownership

NEIGHBORS

St John University, Central Park Orthodontics, The Center for Avian & Exotic Medicine, NY Kids Dentistry & Orthodontics, American Museum of Natural History

A
5,000 SF

B
3,000 SF



Winick Realty Group LLC, Licensed Real Estate Brokers
655 Third Avenue, 24th Floor | New York, NY 10017
T 212.792.2600 | F 212.792.2660 | winick.com

ALTHOUGH ALL INFORMATION REGARDING PROPERTY FOR SALE, RENTAL OR FINANCING IS FROM SOURCES DEEMED RELIABLE SUCH INFORMATION HAS NOT BEEN VERIFIED, AND NO EXPRESS REPRESENTATION IS MADE NOR IS ANY TO BE IMPLIED AS TO THE ACCURACY THEREOF, AND IT IS SUBMITTED SUBJECT TO ERRORS, OMISSIONS, CHANGE OF PRICE, RENTAL OR OTHER CONDITIONS, PRIOR SALE, LEASE OR FINANCING, OR WITHDRAWAL WITHOUT NOTICE

For more information, please contact our exclusive agents:

Oliver Stern
212.792.2609
ostern@winick.com

Michael Shkreli
212.792.2638
mshkreli@winick.com