

159 COLUMBUS AVENUE RETAIL FOR UWS

NEW YORK, NY 10023 LEASE



WINICK

159 COLUMBUS AVENUE

NEW YORK, NY 10023

| Northeast Corner of West 67th Street |

SIZE

Ground Floor: 748 Square Feet

FRONTAGE (approx.)

20' on Columbus Avenue

POSSESSION

Immediate

ASKING PRICE

Upon Request

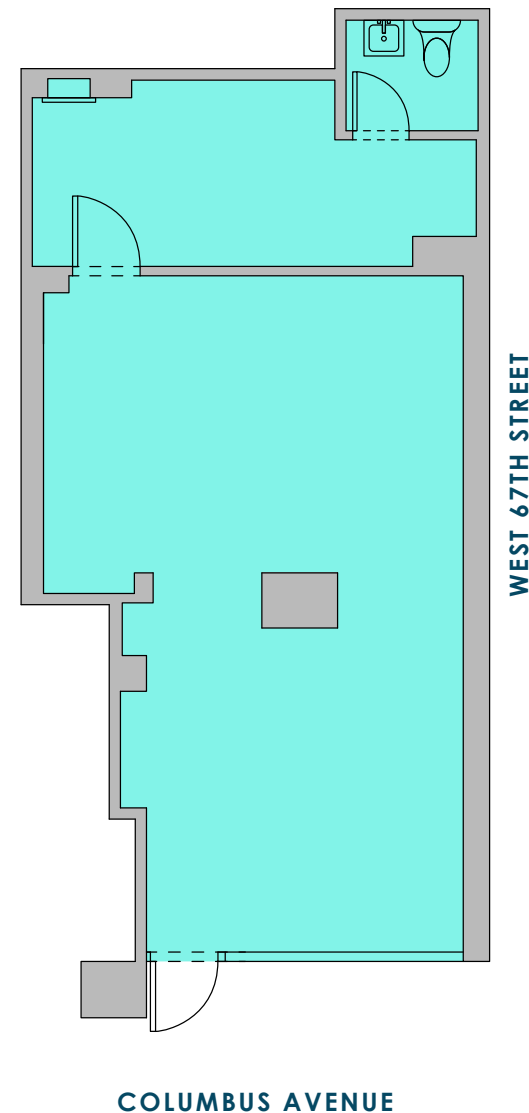
COMMENTS

- Steps from Lincoln Center

NEIGHBORS

Sweetgreen, Blue Bottle Coffee, Athleta,
Warby Parker, Joe Coffee

Ground Floor 748 SF



Winick Realty Group LLC, Licensed Real Estate Brokers
655 Third Avenue, 17th Floor | New York, NY 10017

ALTHOUGH ALL INFORMATION REGARDING PROPERTY FOR SALE, RENTAL OR FINANCING IS FROM SOURCES DEEMED RELIABLE SUCH INFORMATION HAS NOT BEEN VERIFIED, AND NO EXPRESS REPRESENTATION IS MADE NOR IS ANY TO BE IMPLIED AS TO THE ACCURACY THEREOF, AND IT IS SUBMITTED SUBJECT TO ERRORS, OMISSIONS, CHANGE OF PRICE, RENTAL OR OTHER CONDITIONS, PRIOR SALE, LEASE OR FINANCING, OR WITHDRAWAL WITHOUT NOTICE

For more information, please contact our exclusive agent:

Steven E. Baker, President

212.792.2636
stevenb@winick.com

Charles Rapuano

212.792.2658
charles@winick.com



Winick Realty Group LLC, Licensed Real Estate Brokers
655 Third Avenue, 17th Floor | New York, NY 10017

For more information, please contact our exclusive agent:

Steven E. Baker, President

212.792.2636
stevenb@winick.com

Charles Rapuano

212.792.2658
charles@winick.com

ALTHOUGH ALL INFORMATION REGARDING PROPERTY FOR SALE, RENTAL OR FINANCING IS FROM SOURCES DEEMED RELIABLE SUCH INFORMATION HAS NOT BEEN VERIFIED, AND NO EXPRESS REPRESENTATION IS MADE NOR IS ANY TO BE IMPLIED AS TO THE ACCURACY THEREOF, AND IT IS SUBMITTED SUBJECT TO ERRORS, OMISSIONS, CHANGE OF PRICE, RENTAL OR OTHER CONDITIONS, PRIOR SALE, LEASE OR FINANCING, OR WITHDRAWAL WITHOUT NOTICE