



COLUMBIA U. /
MORNINGSIDE HEIGHTS

RESTAURANT FOR LEASE

1215
AMSTERDAM

PHARMACY
GREETINGS • FAX • COPY • LOTTO 212-749-8480
HARTLEY PHARMACY

SLICED PIZZA CO.
BY HARLEN PIZZA CO.
SLICED

1215 646-490-6900

PIZZA CATERING AVAILABLE
LASAGNA, BAKED ZITI, HEROS, CALZONES, WINGS

PIZZA All Day
Wings - Buffalo, Honey Mustard, BBQ, Buffalo
Pasta - Spaghetti, Penne, Meat Sauce, Bolognese, Carbonara, Cream Sauce, Alfredo, Pesto, Truffle
Tenders - Chicken, Beef, Pork, Fish, Shrimp
Salads - Caesar, Garden of Eatin', House, Asian, Greek, Buffalo, Ranch, Lemon Poppy Seed, Pesto
Heros - Turkey, Pepperoni, Ham, Bacon, Sausage, Veggie, Buffalo, BBQ, Honey Mustard, Ranch, Thousand Island, Special

PIZZA

HOME OF THE FAMOUS 10"
PHILLY CHEESESTEAK SUB
1213 AMSTERDAM AVE
SUBS CONSCIOUS
We are now ordering and
"ORDER ONLINE"
www.subsconscious.com

BREA
A large potted plant is visible in the foreground on the right side of the image.

1215 AMSTERDAM

NEW YORK, NY 10027

| Between 119th and 120th Streets |

SIZE (approx.)*

Ground Floor 623 SF

Basement 363 SF

FRONTAGE

12' on Amsterdam Avenue

POSSESSION

Q1 2024

ASKING PRICE

Upon Request

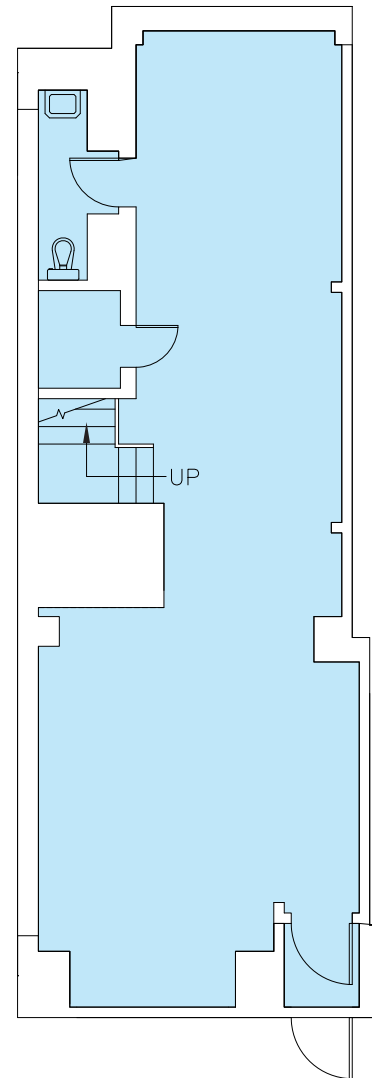
COMMENTS

- Currently Sliced by Harlem Pizza Company
- Rare, small campus/Morningside Heights space
- Surrounded by campus buildings on all sides
- Type 2 KX

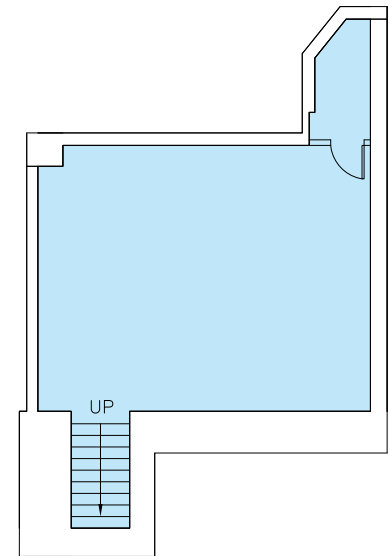
NEIGHBORING TENANTS

Columbia U. classrooms and housing, Barnard, Mt. Sinai Morningside hospital, Union Theological Seminary, Manhattan School for Music, public and private K-12 schools, retail, services and F&B

GROUND FLOOR 623 SF



BASEMENT 363 SF



AMSTERDAM AVENUE

FOR MORE INFORMATION,
PLEASE CONTACT
EXCLUSIVE AGENTS:

Kenneth Hochhauser

212.792.2605

khochhauser@winick.com

Yoel Gorjian

212.792.2646

ygorjian@winick.com

WRG WINICK
REALTY GROUP

Winick Realty Group LLC, Licensed Real Estate Brokers
655 Third Avenue, 24th Floor | New York, NY 10017
T 212.792.2600 | F 212.792.2660 | winick.com

ALTHOUGH ALL INFORMATION REGARDING PROPERTY FOR SALE, RENTAL OR FINANCING IS FROM SOURCES DEEMED RELIABLE SUCH INFORMATION HAS NOT BEEN VERIFIED, AND NO EXPRESS REPRESENTATION IS MADE NOR IS ANY TO BE IMPLIED AS TO THE ACCURACY THEREOF, AND IT IS SUBMITTED SUBJECT TO ERRORS, OMISSIONS, CHANGE OF PRICE, RENTAL OR OTHER CONDITIONS, PRIOR SALE, LEASE OR FINANCING, OR WITHDRAWAL WITHOUT NOTICE

