

LOWER EAST SIDE

121

LUDLOW STREET

BETWEEN RIVINGTON & DELANCEY STREETS
NEW YORK, NY 10002



WINICK

121 LUDLOW STREET

BETWEEN RIVINGTON &
DELANCEY STREETS
NEW YORK, NY 10002

Size

Third Floor: 1,400 SF

Ceiling

10.5 feet

Possession

Immediate

Asking Price

Upon Request

Highlights

- Steps from the F Subway Station
- Open sky deck

Neighbors

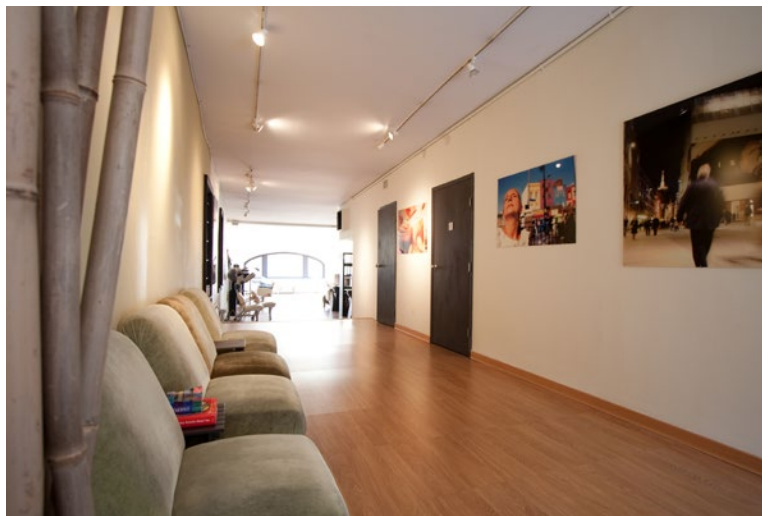
Starbucks, Melt Bakery, Wildair, Wolfnights,
Ramen Ishida, Bank of America Financial
Center

For more information, please contact our exclusive agents:

Young Byunn

212-792-2645

young@winick.com



WINICK

Winick Realty Group LLC, Licensed Real Estate Brokers
655 Third Avenue, 17th Floor | New York, NY 10017 | T 212.792.2600 | winick.com

ALTHOUGH ALL INFORMATION REGARDING PROPERTY FOR SALE, RENTAL OR FINANCING IS FROM SOURCES DEEMED RELIABLE SUCH INFORMATION HAS NOT BEEN VERIFIED, AND NO EXPRESS REPRESENTATION IS MADE NOR IS ANY TO BE IMPLIED AS TO THE ACCURACY THEREOF, AND IT IS SUBMITTED SUBJECT TO ERRORS, OMISSIONS, CHANGE OF PRICE, RENTAL OR OTHER CONDITIONS, PRIOR SALE, LEASE OR FINANCING, OR WITHDRAWAL WITHOUT NOTICE