

# 111 THIRD AVENUE

**EAST VILLAGE**

BETWEEN EAST 13<sup>TH</sup> & EAST 14<sup>TH</sup> STREET | NEW YORK, NY 10003



WINICK

# 111 THIRD AVENUE

SPACE A

SPACE B



\*Do not disturb tenant

GROUND FLOOR Approx. 2,850 SF  
LOWER LEVEL Approx. 900 SF

**SIZE**

GROUND FLOOR Approx. 3,550 SF  
LOWER LEVEL Approx. 1,550 SF

ARRANGED POSSESSION IMMEDIATE

30 FEET ON 3<sup>RD</sup> AVENUE FRONTAGE 30 FEET ON 3<sup>RD</sup> AVENUE

UPON REQUEST ASKING RENT UPON REQUEST

Great glass frontage  
Divisions considered  
Lower Level can be made into selling retail space

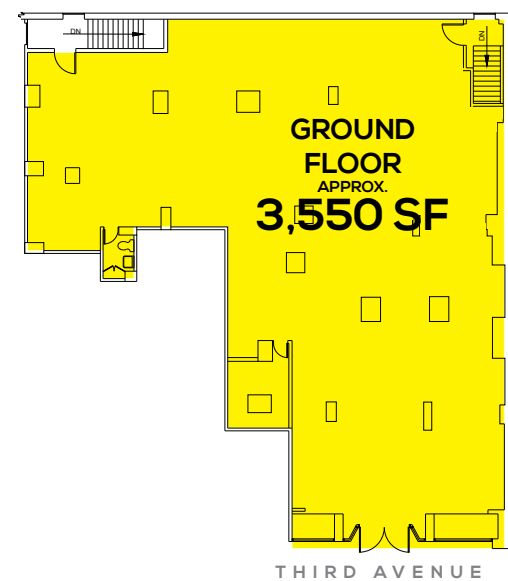
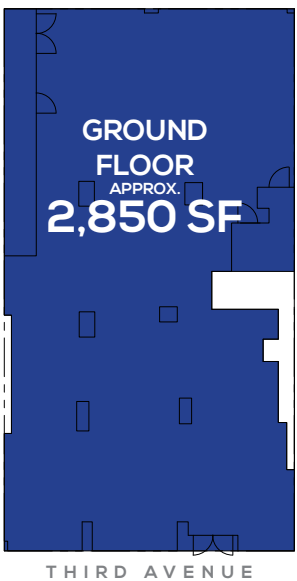
**COMMENTS**

Glass frontage on a high foot traffic block  
Steps from 1st Avenue  
L train stop

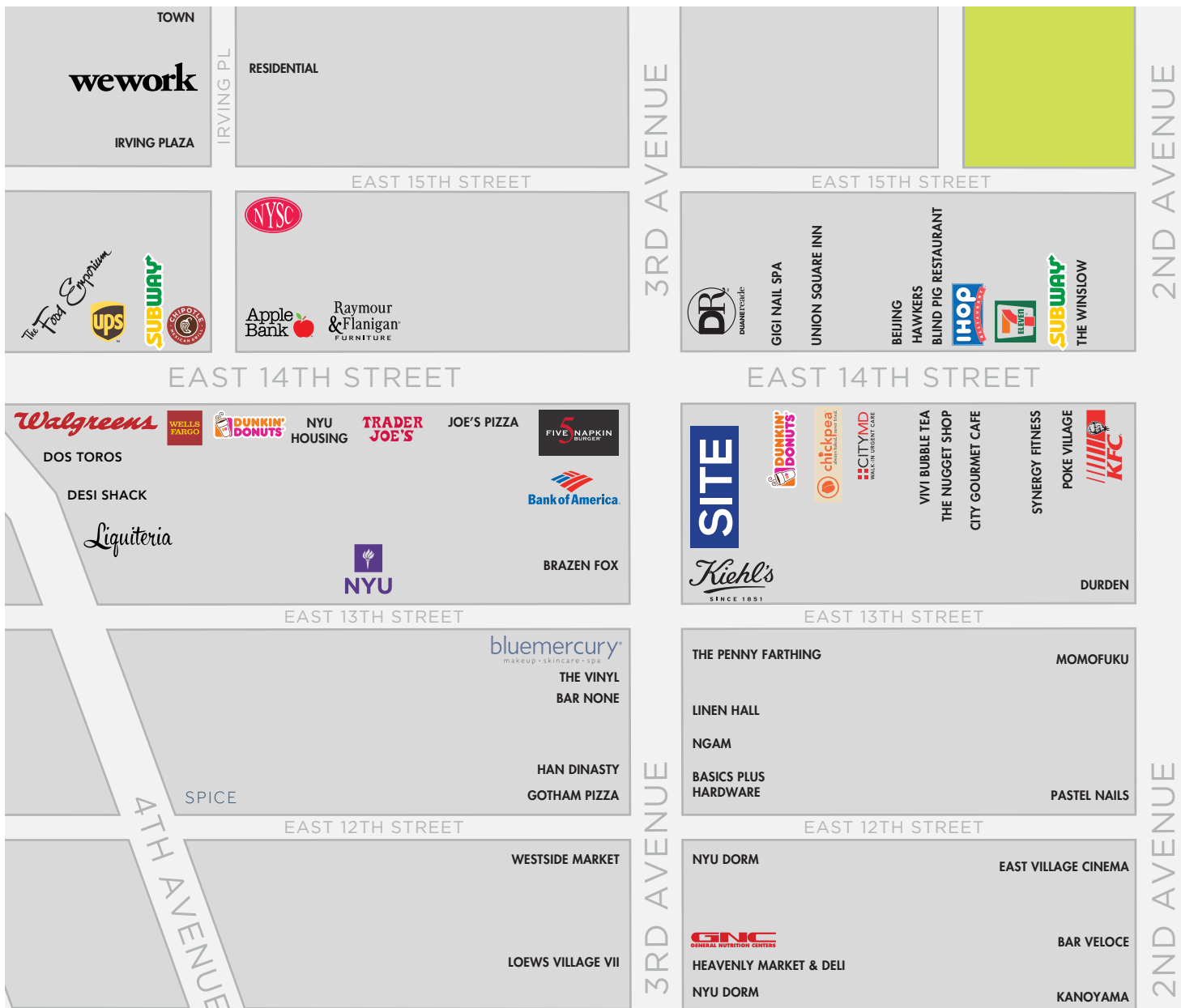
Spaces can be combined  
All uses considered

**NEIGHBORS**

Five Napkin Burger, Bank Of America, Keihl's, Duane Reade, Bluemercury, Westside Market







FOR MORE INFORMATION CONTACT EXCLUSIVE AGENTS:

**JORDAN BLOOM**  
**212.792.2641**  
jbloom@winick.com

**JEFF WINICK, CEO**  
**212.792.2601**  
jeff@winick.com

**WINICK**

WINICK REALTY GROUP LLC  
LICENSED REAL ESTATE BROKERS  
655 Third Avenue, 17th Floor, New York, NY 10017  
T: 212.792.2600 F: 212.792.2660 winick.com

Although all information regarding property for sale, rental or financing is from sources deemed reliable such information has not been verified, and no express representation is made nor is any to be implied as to the accuracy thereof, and it is submitted subject to errors, omissions, change of price, rental or other conditions, prior sale, lease or financing, or withdrawal without notice.